



## Situation Report

Response Name	Tropical Cyclone Donna
Situation Report	08
Time & Date	12:00 26 <sup>th</sup> May 2017
Reporting period	17/05/2017 – 26/05/2017
Provinces affected	Torba, Sanma, Malampa
Attachment(s)	Various
NEOC Status	Operational

## Event Overview

Tropical Cyclone Donna moved in a westerly direction passing north of the Vanuatu group within 50-100km the Torres islands in Torba Province as a Category 3 system.

The system continued west, before turning south, gathering strength to become a Category 5 cyclone and passed to the west of Sanma, Malampa and Shefa. Tropical Cyclone Donna passed about 200km to the west of the islands of Vanuatu.

The National Disaster Management Office (NDMO) issued the all clear on Tuesday 9<sup>th</sup> May 2017.

## Current Situation

Relief supplies identified during the rapid/initial damage process have been delivered to the affected areas in Torba (see attachment). This included packaged pre-cooked foods, water, shelter & hygiene kits, seeds and fishing gear. The NEOC is continuing to liaise with the Torres and Sanma Provinces regarding any further immediate needs.

The NDMO is now co-ordinating the Detailed Damage Assessment process to identify longer term needs and recovery activities.

The Sanma Provincial Emergency Operations Centre (PEOC) organised a multi sectoral team to complete detailed assessments of affected areas. The Commissioner of Police approved the use of the Vanuatu Patrol Boat RVS Turoroa with the support of the Australian Government. The team

commenced assessments on Wednesday 24<sup>th</sup> May 2017 and the RVS Turoroa will transport team members to West Santo.

A multi sectoral team departed Port Vila for Torres on Thursday 25<sup>th</sup> May on board a charter flight supported by the French Government. Some additional relief supplies were also loaded onto this flight including corn seeds, fishing gear, tarpaulins, chainsaw tools and other supplies. This team will complete detailed assessments of affected areas before returning to Port Vila on Monday 29<sup>th</sup> May 2017.

All Clusters, Provinces and assessments teams have been requested to submit their reports/findings by COB Tuesday 30<sup>th</sup> May 2017. The NEOC will use this information to draft a response plan for consideration by the National Disaster Council.

Previous situation reports and operational maps can be accessed using this link: [http://www.ndmo.gov.vu/resources/downloads/com\\_jaextmanager/category/22-tropical-cyclone-donna](http://www.ndmo.gov.vu/resources/downloads/com_jaextmanager/category/22-tropical-cyclone-donna)

The NEOC is also working with the Tafea Province to freight local produce to Torres kindly donated by the people of Tanna.

## General Coordination

---

The NDMO is co-ordinating national activities and the NEOC remains operational. Provincial Disaster Committees remain operational in Torba and Sanma. Clusters are continuing to make remote assessments and gathering information on available resources for response.

**All information should also be shared with the NEOC to ensure proper co-ordination and to avoid duplication.**

## Ambrym Volcano

---

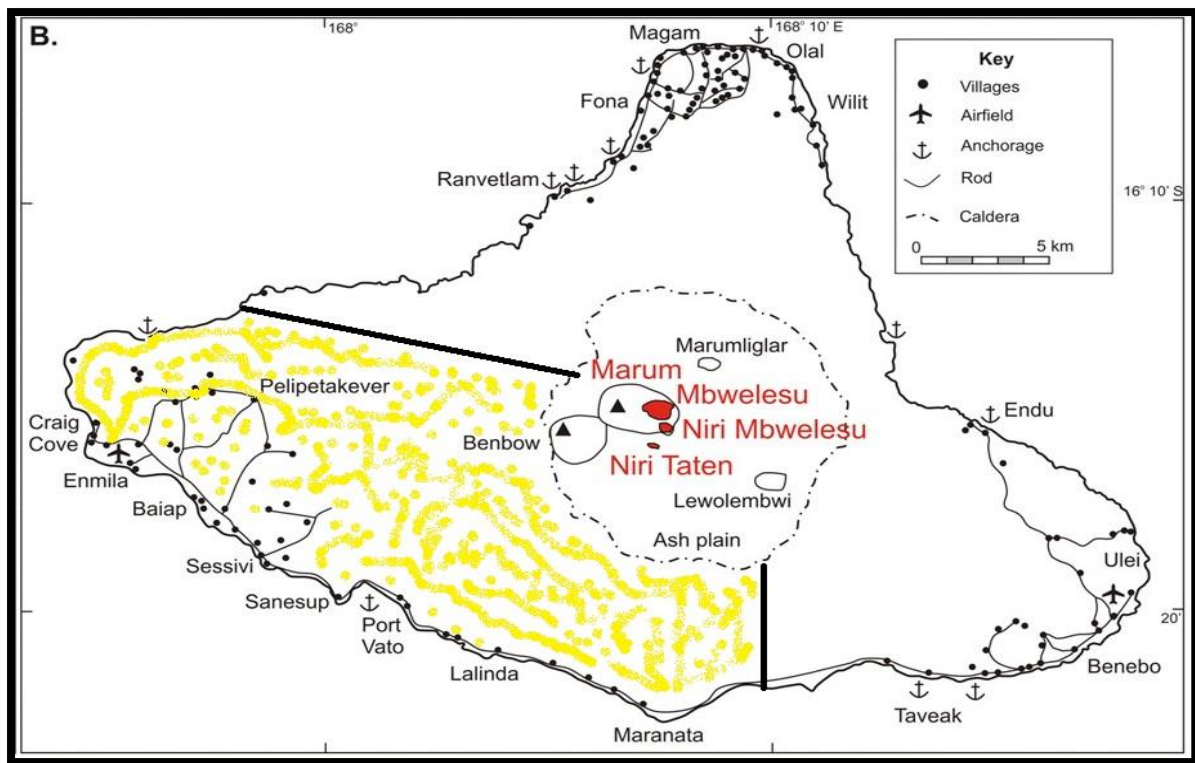
The Ambrym volcano remains at Level 2 however the Vanuatu Meteorological & Geo Hazards Department (VMGD) has reported activity. The volcanic activity has reportedly affected drinking water supply and local food crops which have been destroyed by acid rain.

The NDMO Director arranged for the deployment of a Food Security/Agriculture (FSAC) and Water Sanitation Hygiene (WASH) cluster representatives to Ambrym to complete an assessment of the area depicted over page.

This two person team was briefed by the NDMO and VMGD on Tuesday 23 May 2017 before departing on Wednesday 24 May 2017.

The team commenced assessment on arrival in Ambrym and provided the preliminary advice:

- Serious acid-rain crop damage and low water pH reading (3-3.5) in some villages however it is confined to villages located close to the volcano



The assessment team will submit a report by COB Tuesday 30 May 2017, which will accurately describe any water quality problems and crop damage, and the geographical extent of any impacts on Ambrym, together with recommendations for any response.

## Further Information

**VMGD Weather:** [www.vmgd.gov.vu](http://www.vmgd.gov.vu)

**NDMO:** [www.ndmo.gov.vu](http://www.ndmo.gov.vu)

**Prepared by:** NDMO Information Management Unit

**Released by:** Mr Shadrack Welegtabit, Director NDMO

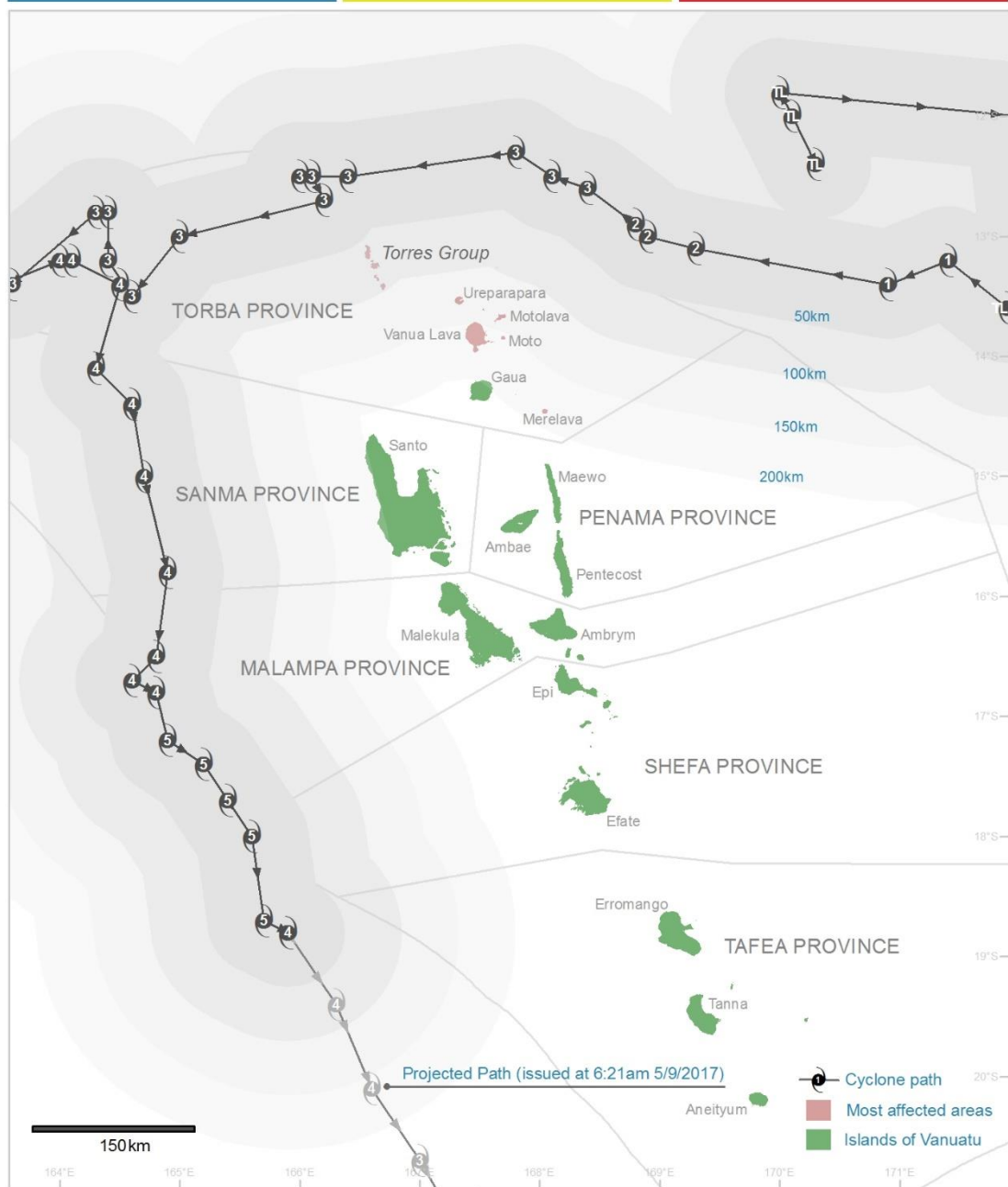
**Next situation report:** 02 June 2017

<b>Relief Supplies distributed in Torba Province (as at 20 May 2017)</b>						
<b>ITEMS</b>	<b>HUI (50)</b>	<b>METOMA (2)</b>	<b>TEGUA (19)</b>	<b>LOH (41)</b>	<b>TOGA (64)</b>	<b>TOTAL</b>
2 stroke oil (carton)	1	1	1	2	1	<b>6</b>
Benzine 200L petrol (drum)	0	0	0	2	0	<b>2</b>
Buckets with lids	50	2	19	41	64	<b>176</b>
Cartons of water	200	0	0	0	0	<b>200</b>
Chainsaw (on loan from PWD Vila)	1	0	0	0	0	<b>1</b>
Cooked cassava (2.5kg pack)	79	4	31	66	100	<b>280</b>
Cooked chicken packs	79	4	31	66	100	<b>280</b>
Fishing gear (bags)	3	1	1	2	3	<b>10</b>
Hygeine Kits	50	2	19	44	64	<b>179</b>
Jerry cans 10L	150	6	59	123	64	<b>402</b>
Kitchen set	0	0	0	4	0	<b>4</b>
Life straw water filters	4	1	1	3	5	<b>14</b>
Manioc cuttings (bags)	2	1	1	1	2	<b>7</b>
Medical supplies						
Rainman desalination units	1	0	0	0	0	<b>1</b>
Sanitary pads	100	4	38	82	128	<b>352</b>
Shelter tool kits (IFRC)	50	2	19	44	64	<b>179</b>
Soap bars	600	24	230	82	768	<b>1704</b>
Tarpaulins (VRCS)	54	2	19	44	64	<b>183</b>
Torch	50	2	19	41	64	<b>176</b>
Towels	100	4	38	82	128	<b>352</b>
Water containers 20L (filled)	28	2	11	23	36	<b>100</b>
Water hygeine kits	10	1	4	7	13	<b>35</b>
Water purification tablets (pkts)	300	12	117	99	392	<b>920</b>

# Situation update: Tropical Cyclone Donna

Cyclone path and most affected areas

**Map details**  
Version 2  
16:00 Port Vila, Vanuatu  
9<sup>th</sup> May 2017



**Data Sources**  
Cyclone path: [meteo.gov.vu](http://meteo.gov.vu)  
Most affected areas: NDMO

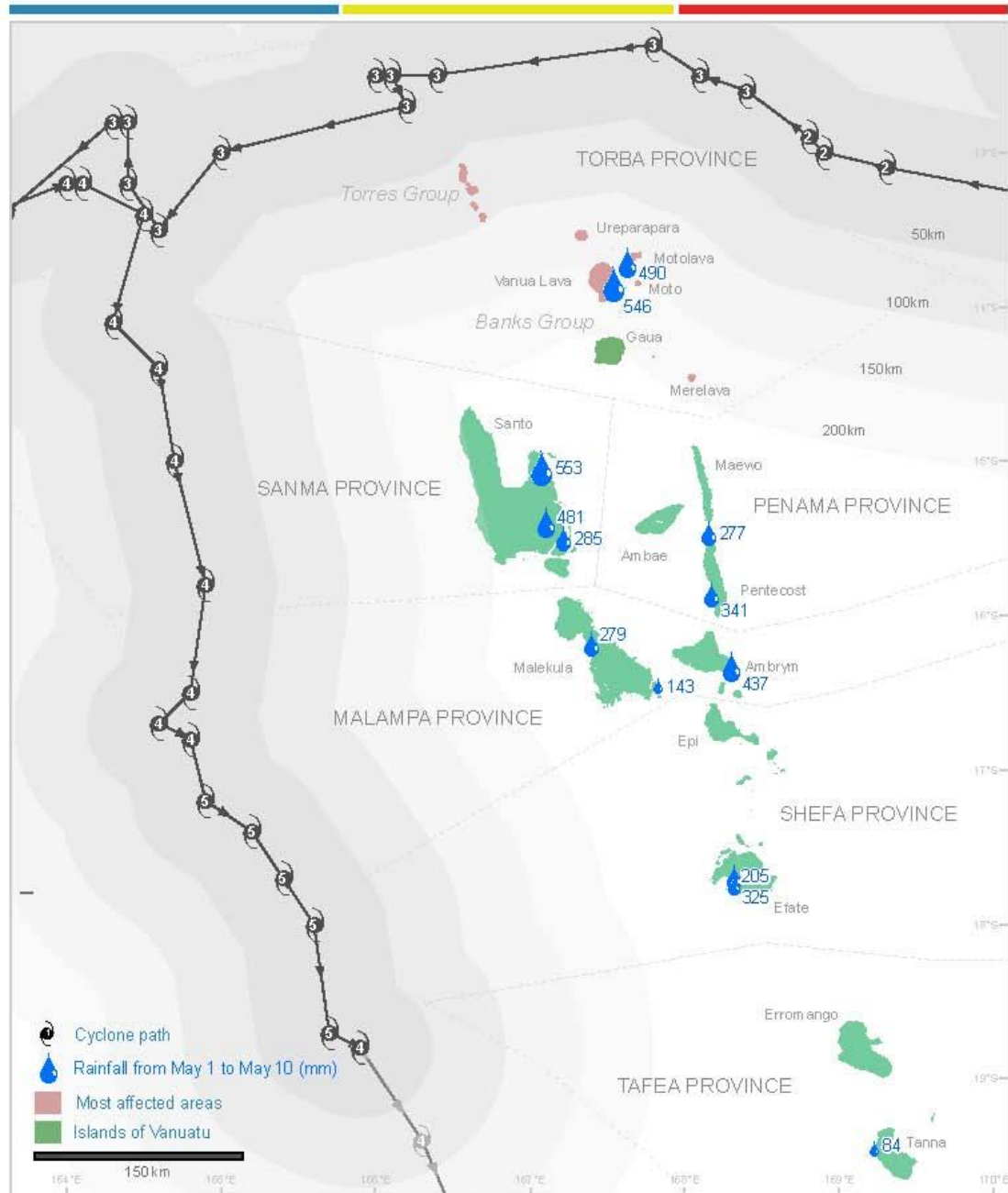


The information in this map is from a range of sources. The NDMO takes no responsibility for the accuracy of the information provided.

# Situation update: Tropical Cyclone Donna

Cyclone path, Rainfall and most affected areas

**Map details**  
Version 3  
10:00 Port Vila, Vanuatu  
12<sup>th</sup> May 2017



### Data Sources

Vanuatu Meteorology and Geo-Hazards Department



*The information in this map is from a range of sources. The NDMO takes no responsibility for the accuracy of the information provided.*