



Situation Update: Ambae Volcanic, (26 April 2018)



BACKGROUND

A state of emergency is still in force in the whole of Ambae until 13 July and the whole island has been declared a disaster zone. The government's priority is to move families to safe locations. The situation on Ambae has deteriorated with traditional houses and trees collapsing under the weight of the toxic ash, grazing lands becoming unusable and both food and water sources contaminated. There have also been reports of diarrhea and skin ailments occurring but these would have to be confirmed by health officials.

AFFECTED POPULATION



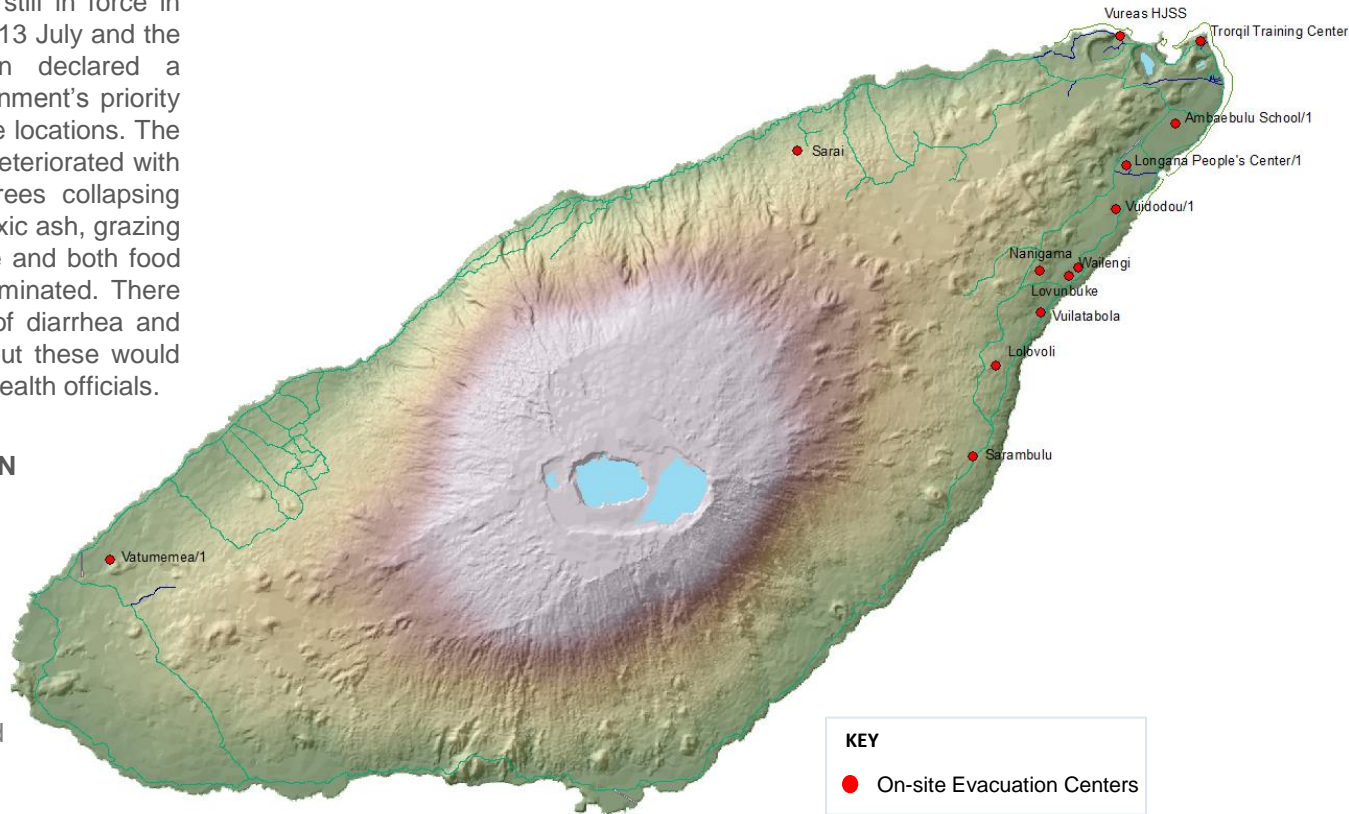
10,112

people in Ambae affected



640

people currently in evacuation centres



KEY

● On-site Evacuation Centers

RESPONSE

14

evacuation centers in Ambae



Registration and issuance of Identification cards to communities that evacuated to east Ambae has been completed

ASSESSMENTS



Cluster assessment teams deployed to Ambae to assess the potential transitional sites and advice on their suitability have sent back from preliminary findings that are currently being summarized at the NDMO.

Further information:

VMGD Volcano update: www.vmgd.gov.vu

NDMO

<https://ndmo.gov.vu>

Next Sitrep

27 / April / 2018