

## INTRODUCTORY INFORMATION

**SitRep 6**

**Date:** 06/06/2018

**Country:** Vanuatu

**Type of disaster:** Volcanic Ash Fall

**Incident Location:** Ambae, Penama

**Operation Location:** Maewo, Penama



## HIGHLIGHTS

- WASH Emergency Response Team deployed to Ambae and based at Kerebei
- Survey completed on Bailata water source for Loloruku new settlement area
- WASH Relief supplies distributed in host schools on Maewo
- Feasibility study conducted on various water sources for new relocation sites.

## A. CONTEXT

People from affected areas particularly students from Ambaebulu Junior Secondary School and Navutiriki JSS have relocated to Gambule Junior Secondary School and Nasawa School and continue with normal classes. Further relocation should start in mid June right through to the month of July. The WASH Team will start implementing few Response activities as outline above.

The WASH team had expanded the Response activities from Ambae to Maewo island (Kerebe, Nadiutu, Naonne and Naumumu). Deployment team will undertake assessment and observation to four different allocated sites and provide designs for the Water system. Two of the sites, Loloruku and Nasawa are confirm sites which the team will concentrate on in this deployment.

A few challenges encountered throughout few days of deployment in this area is breaking down of network communication and also power sources capable of supplying electricity to Laptops and printers.

## B. AFFECTED POPULATION/NEEDS ASSESSMENT

Currently students in Ambaebulu Junior Secondary school have now been relocated to Gambule Junior Secondary schools to continue due to the ongoing but slow disaster. WASH team on the ground will continue to assess situation on the ground which includes further assessment to existing infrastructure and also Hygiene promotion awareness.

Relocating students from Ambaebulu School to Gambule Schoo & Navutiriki JSS to Nasawa Schooll:

Locations	School	# of female	# of Male	Total	# of Staffs
North Maewo	Gambule Junior Secondary School	48	52	100	5
South Maewo	Nasawa Primary.	TBU	TBU	TBU	

\*One relocation of students only in the last week from Ambaebulu to Gambule JSS.

## C. PROGRAMMING

**C.1** WASH activities are implemented according to the response plan, Priority focus is now on preparing and assessing new and current sites for the relocating of evacuees from Ambae to Maewo. Outline are the ongoing activity in the island:

- **New SITE observation and Assessment**
- **Water System Design for different sites**
- **WASH awareness- Sanitation and Hygiene In schools**
- **Distribution of Poly Tanks to Schools**
- **Household and Infrastructure Assessment**
- **Toilet Paper distribution to Schools and Health Centers**

### C2. OUTCOMES:

Tables showing distributions of Wash and Hygiene Supplies to Schools and Health Centers.

Locations	SCHOOLS/ HEALTH CENTERS	FEMALE #	MALE #	WASH & HYGIENE KITS DISTRIBUTION			
				Toilet Paper	WASH & Sanitation Awareness		
<b>NORTH MAEWO</b>	<b>GAMBULE JSS</b>	48	52	600	1		
<b>NORTH MAEWO</b>	KEREMBEI HEALTH CENTER	<b># of STAFFS</b>	<b>Patient # per day</b>				
		5	15	200			

\*The table above shows a total of 800 toilet paper being distributed to Health Centre and Gambule School, 1 WASH and Sanitation awareness conducted in Gambule Junior Secondary School.

### C 4 .Community Awareness & WASH Key Messaging

To support the ongoing WASH response in Ambae, WASH Cluster has now developed its standard key messages. These messages are critical to transmit correct information to communities on safety measures to protect their water sources and promote water security. Key messages will also be air through different media outlets to inform and educate the general public on ways to protect water sources against different volcanic associated hazards.

WASH ICE (Information Communication Education) materials will be arriving this week to continue WASH awareness in both schools, Gambule and Nasawa including the Health centre in Kerembei .

Below are some sample

# VOLKENO GASREN MO ASIS WASH MESEJ

**Yu amosem ol korel o ol sel i emolamol mo yu putum i go isasod long tank/wel blong yu blong hemi klinim kemikel blong asis blong volkeno.**

**Sapos oe blong yu i stop som mo soe frans se ren blong volkeno i go long hem, plis yu mas go long wan klinim o hemi semta blong kasem trinitem.**

**Stop insaed long haes sapos ol efek blong asid ren i strong tumas**

**Yu kavremap gud ruf blong wel blong yu wetem wan kapa sapos ren blong volkeno i foldaon.**

**Mekem sua se telet blong yu hemi strong blong asis i no save brekem.**

**Otaem yu mas boelem wota bifo yu drink blong klinim bobet we i kam oout long sisi blong man mo animol.**

**Drink plante kiin wota.**

**Wasem han blong yu otaem wetem sap afta we yu go long toelet.**

**Lisen long radio long otaem disaste infomeisen.**

**KOLEM 22423 BLONG MOA INFOMEISEN**

## Protiekem Renwota Sos Blong Yu

**Fesflas Wota Sistem**

**Yu save kasem save blong otaem yu mas mo yu save mekem wan fesflas sistem long Dipatmen Blong Wota Risos.**

**Grampaot asis long ruf**

**Grampaot asis ol kila wota we yu kasem i atap blong kapa mo asis.**

**Klinim gud wota tank mo wota sapose sistem blong yu**

**Plis yu kolem mifala long Dipatmen Blong Wota Risos blong karem moa infomeisen, o sapos yu gat wan ripot blong yu talem long mifala.**

**22423**

**VOLKENO ASIS WASH MESEJ**

## wanem blong mekem afta

- **Karemaot kapa long ruf blong wel sloslo nomo.**
- **Sapos yu nogat wota o fesflas sistem blong wasemaot ol asis blong volkeno: taem nekis ren i stat blong foldaon yu mas wet blong 30 minut bifo yu save konektem bak paep we i karem wota long kapa i go long tank/wel.**
- **Sapos tank/wel i tes mo i smel nogud, mek sua se yu karemaot wota, klinim gud tank blong ren i fulumap bakeken.**
- **Sevem gud ol botel wota mo kokonas blong yu save givim long ol bebe, ol pikinini, ol olfala, mo yumi we i gat disabiliti.**

**RIMEMBA YU WASEM GUD HAN**

**afta we yu yusum toelet**

### efek blong gas blong volkeno

**Gas blong volkeno hemi wan rabis gas we i save klitim ol tri, mo i save afektem olgeta we oli gat sotwiit.**

### efek blong ren blong volkeno

**Ren blong volkeno (Asid Ren) hemi save spolem ol wota, ol tri, mo i save spolem tu ol haos mo i mekem kapa i roten hariap.**

**Hemi nogud tu long yumi mo ol animol from se hemi save mekem yumi sik.**

---

**Plis yu kolem mifala long Dipatmen Blong Wota Risos blong karem moa infomeisen, o sapos yu gat wan ripot blong yu talem long mifala.**

**22423**

# VOLKENO

# ASID GAS MO REN WASH MESEJ

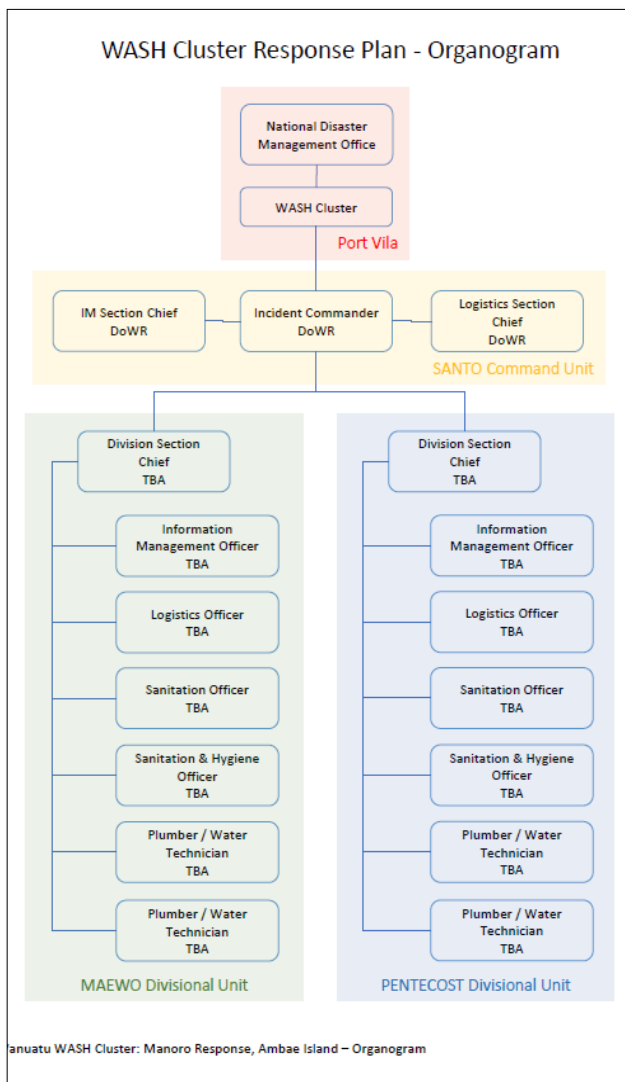
## D. PARTNERSHIP AND COORDINATION

WASH Cluster at the National level remains active and maintaining its linkages with other clusters and the NDMO. A Branch Divisional Unit has been set up at Saratamata and Last week WASH Cluster has set up its Divisional Unit at Kerebe on Maewo.

The WASH Cluster have now Contracted a WASH Coordination team whom will be representing Vanuatu WASH Cluster in Maewo. The Northern WASH Division team main responsibilities is to ensure affected population have access to sufficient safe drinking water, appropriate sanitation and hygiene products with dignity and provide WASH Awareness.

The Contractors for Maewo WASH Division- Pacific Communities Development Vanuatu (PCDV), CARE and Multi-FIX.

Below is the WASH Cluster Response Organogram and the name of Contractors for Maewo Division Team;



Contractor	Role	Person	DAYS	FROM	TO
CARE	Sanitation Officer	Ruth Ierasoa	30	Wed 30 May	Thu 28 Jun
	Water Technician/Plumber	George Ihalu	30	Wed 30 May	Thu 28 Jun
PCDV	Division Section Chief	Arthur Faerua	37	Wed 23 May	Thu 28 Jun
	Information Management Officer	Richard Meto	30	Wed 30 May	Thu 28 Jun
	Sanitation and Hygiene Officer	Helen Joseph	30	Wed 30 May	Thu 28 Jun
Multi-Fix	Water Technician/Plumber	Eric Jacob	30	Wed 30 May	Thu 28 Jun
	Logistics Officer	Chris Wus	37	Wed 23 May	Thu 28 Jun

On the ground, WASH team continues to work closely with the Health Cluster. WASH Team will be focusing on hygiene promotion awareness particularly in schools and Health Center.

WASH Cluster continues to work with our inter cluster coordination team.

Other partners such as VMF, Livestock and Agriculture, civil status, Meteo Officers, Save the Children, and Cooperatives plus Chiefs also support the team on the ground. WASH team would like to acknowledge their support despite the challenges faced.

WASH Cluster is putting its response on hold on Ambae due to lack of resources such as fuel for water tracking and cancellation of WASH Team allowance by NDMO. The Operation Centre on Ambae closed on Friday 1<sup>st</sup> June 2018 its main activities. Staff were re-deployed back to their original positions.

Operation report is scheduled to be issued once a week.

## E. DONOR UPDATE

WASH Cluster acknowledges ongoing support from its agencies (Vanuatu Government, MFAT, Red Cross, NGOs) who continues to provide relief supplies being distributed on Ambae

The Table below provides an updated summary of donor's assistance to the WASH Cluster:

Donor Name	Support Provided	Status
Vanuatu Government	<ul style="list-style-type: none"> <li>• 5,512 cartons of 1.5 bottled water</li> <li>• 4,000 roll of toilet paper</li> <li>• Logistics Support</li> <li>• Funding</li> </ul>	Distributed
MFAT	<ul style="list-style-type: none"> <li>• 1000 Family Hygiene Kits</li> <li>• 1,050 10L collapsible water container</li> <li>• 50 water tanks of 6,000Lt</li> <li>• 49 rain water harvesting kits (spouter brackets, joiner, stopper, outlets etc)</li> </ul>	Stored in NDMO shared warehouse in Santo. Not yet distributed
MFAT/ADRA	<ul style="list-style-type: none"> <li>• 220 Hygiene Kits</li> <li>• 220 WASH Kits</li> <li>• 10 VIP Seat Raiser/Slap</li> </ul>	Distributed
	<ul style="list-style-type: none"> <li>• 1860 Hygiene kit</li> <li>• 250 WASH Kits</li> <li>• 1,000 10lt water container</li> <li>• 50 6,000lt water tanks + first flush materials</li> </ul>	Planned  Stock in Vila/Santo  To be dispatched for distribution
UNICEF	<ul style="list-style-type: none"> <li>• 955 Hygiene &amp; Dignity Kits</li> </ul>	Distributed
Red Cross	<ul style="list-style-type: none"> <li>• 212 hygiene kits</li> <li>• 60 collapsible Jerry Cans</li> <li>• 200 20lt water container</li> </ul>	Distributed

## F. LOGISTICS / SECURITY

Item	Quantity	Storage location	Donor
6,000lt water tanks	19	Kerebe	MFAT
Hatch & Vented lead	19	Kerebe	MFAT
PVC Gutters	38	Kerebe	MFAT
Spout	38	Kerebe	MFAT
Box of water tank accessories	19	Kerebe	MFAT
Bottled Water 15lt	480	Kerebe	MFAT
Family Hygiene Kits	700	Naone	MFAT
Mother Infant kits	300	Naone	MFAT
Hygiene Kits	291	Naone	MFAT
1.5 Carton Water	489	Naone	Vanuatu Yatch Services/ Dragon Fly



Solar Light (box)	53	Kerebe	
Toilet Paper	14800	Kerebe	GoV

WASH Ground Team is now operational in Kerembe Village as the Maewo EOC. Relocating of 74 bale (20 Pkts of 10) about 14,000 toilet paper rolls are now relocated from Gambule School to Kerembe EOC.

The team currently hires a truck in the last three days for Water source site visit and WASH and Hygiene materials relocation from Naone to Kerembe EOC.

A power generator is also hired from local supplier to provide daily power to the EOC and its activities.



## G. STAFFING

Arthur Faerua	Division Section Chief
Christopher Wus	Logistics Officer
Richard Meto	Information Management Officer
Hellen Joseph	Sanitation & Hygiene Officer
Ruth Ieresoa	Sanitation Officer
Marsden Garae	Water Technician/Plumber
Erick Jacob	Water Technician/Plumber

The following staff members are now based in Maewo for a deployment period of 1 month. Intermittently, they will return to Port Vila to update reporting and supplies and then resume activities on Maewo. Main objective is to observe and assess the site and prepare a Water System design from the source to the relocation site. Further to that, Health and Hygiene promotion activities will also be carried out.

## H. RECOMMENDATIONS

1. WASH Needs of Schools in Maewo hosting Ambae Students must be responded to in a timely manner and in some cases, immediate response.
2. Storage Facility must be erected or built on Maewo to store all WASH items in one centralized location for proper recording, release and safety of items.
3. Logistics Support for Maewo EOC must be provided by NDMO including financial support for any extra responsibilities undertaken by staff of Maewo DOWR Division undertaking work for the WASH Cluster.
4. **NDMO to explain why the instruction was issued to FSB in Saratamata to cancel the payment of WASH Officers DSA**
5. Construct new Sanitation Facilities in Gambule JSS and Nasawa School to cater for increased student population. Improve existing Sanitation facilities in Gambule JSS and Nasawa School to cater for increased student population
6. Improve existing Sanitation facilities in Nasawa Dispensary and Kerebei Health Centre to cater for increased student population any outbreaks of disease.
7. **Government Permanent Relocation Taskforce to seek authorization from the COM to grant permission for WASH Recovery program to be implemented in safe Zones on Ambae. WASH Recovery activities include the following:**
  - a) **Upgrade water system at Sarabulu, Lolovovli (located at south East Ambae and currently host affected people from Red Cliff in South Ambae), Lombaha and Vatamwele (located in North East also serve as evacuation centers)**
  - b) **Installation of first flush system in communities**

## I. CONTACT

For further information please contact:

### **Erickson Sammy**

Director  
Department of Water Resources  
Mobile Number: + 678 7791 593  
Email: esammy@vanuatu.gov.vu

### **Erie Sami**

Acting Monitoring and Evaluation  
Manager  
Department of Water Resources  
Mobile Number: +678 7771927  
Email: esami@vanuatu.gov.vu

### **Paolo Malatu**

WASH Coordinator  
Department of Water Resources  
Mobile Number: +678 7777 900  
Email: mpaolo@vanuatu.gov.vu

### **Neil Malosu**

Database/IMO  
Department of Water Resources  
Mobile Number: +678 5927221  
Email: nemalosu@vanuatu.gov.vu

### **Obed Tabi**

Acting Technical Manager  
Department of Water Resources  
Mobile Number: +678  
Email: otari@vanuatu.gov.vu