



## Situation Report

Response Name	Volcanic Activity – Ambae & Ambrym
Situation Report	06
Time & Date	20:45 28 <sup>th</sup> September 2017
Reporting period	26/09/2017 – 28/09/2017
Provinces affected	Penama, Malampa
Attachment(s)	Map of evacuation facilities on Ambae
NEOC Status	Operational

## Situation Overview

Monaro Volcano on Ambae Island remains at Alert Level 4. A State of Emergency is in place for the Island of Ambae. Provincial authorities report that there are an estimated 8,000 people in evacuations centres on Ambae. A Council of Ministers (COMs) meeting was held to discuss the off island evacuation scenario, the NDMO is on-standby to act on the COMs official decision.

Conditions remain difficult in evacuation centres with overcrowding. LC Urata departed Port Vila for Ambae today with a mix of relief items including water, hygiene kits, kitchen kits, tarpaulins, fuel and two lorries to assist with transportation of people and relief items. The LC Mohalia will depart Port Vila tomorrow with additional food, water and tarpaulins for Ambae.

WASH and Food Security specialists deployed this afternoon to East and West Ambae to support provincial authorities and evacuation centre management.

There are over 60 VMF personnel on Ambae assisting the Provincial Government. The vessel RVS Tukoro has delivered relief items and is currently undertaking support missions around Ambae.

VMGD undertook an aerial surveillance mission of the Volcano this morning.

Many offers of assistance have come from individuals, businesses, communities, churches, villages, NGOs and international partners.

## General Coordination

---

An Inter-Cluster meeting was held yesterday at 10am to discuss sector plans.

The National Disaster Management Office (NDMO) is developing an operational strategy in the event of need for a large off island evacuation. NDMO is working with the Sanma provincial authorities, North Pentecost and South Maewo area councils on identifying immediate temporary evacuation centres and areas that could host people in the medium and longer term if required.

### **PENAMA**

The number of people moving into evacuation centres is slowly increasing. An estimated several hundred people have voluntarily moved off Ambae. The NDMO is working with Provincial authorities to collect disaggregated data for evacuees and those that are moving off-island. Today Provincial authorities split into teams to visit communities and evacuees to discuss the situation and the possibility of off island movement. VMF are distributing water to evacuees. WASH and food security staff from Port Vila are assisting provincial authorities.

### **MALAMPA**

Ambrym Volcano remains at Alert Level 3. No further update from Situation Report 02, on the 22nd September 2017.

## Further Information

---

**Volcanic bulletins:** <http://www.vmgd.gov.vu/vmgd/index.php/geohazards/volcano/alert-bulletin>

**Prepared by:** NDMO Information Management Unit

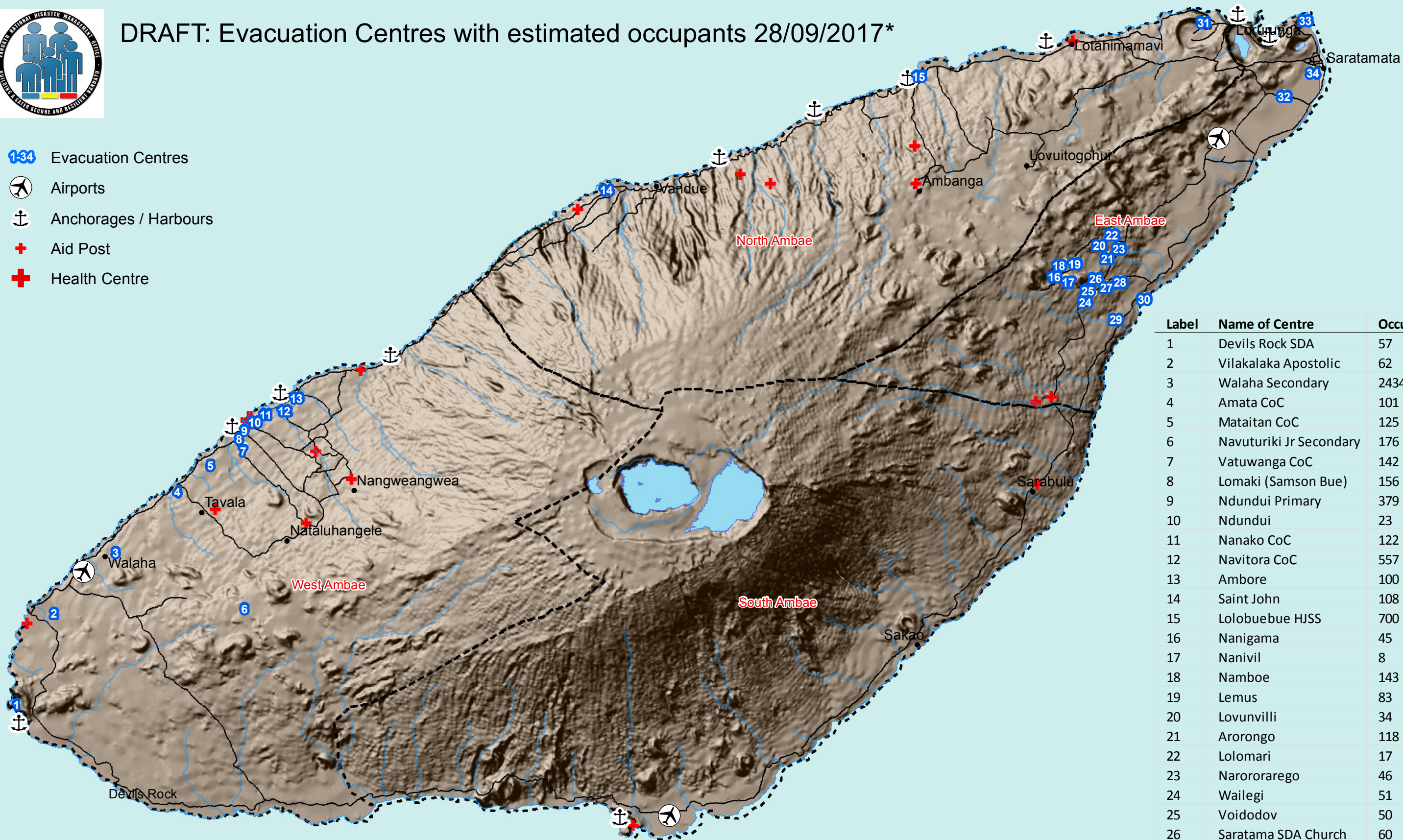
**Released by:** Mr Shadrack Welegtabit, Director, National Disaster Management Office

**Next situation report:** Friday 29th September



# DRAFT: Evacuation Centres with estimated occupants 28/09/2017\*

- 1-34 Evacuation Centres
- Airports
- Anchorages / Harbours
- + Aid Post
- + Health Centre



Label	Name of Centre	Occupants
1	Devils Rock SDA	57
2	Vilakalaka Apostolic	62
3	Walaha Secondary	2434
4	Amata CoC	101
5	Mataitan CoC	125
6	Navuturiki Jr Secondary	176
7	Vatuwanga CoC	142
8	Lomaki (Samson Bue)	156
9	Ndundai Primary	379
10	Ndundai	23
11	Nanako CoC	122
12	Navitora CoC	557
13	Ambore	100
14	Saint John	108
15	Lolobuebue HJSS	700
16	Nanigama	45
17	Nanivil	8
18	Namboe	143
19	Lemus	83
20	Lovunvilli	34
21	Arorongo	118
22	Lolomari	17
23	Narororarego	46
24	Wailegi	51
25	Voidodov	50
26	Saratama SDA Church	60
27	Murai	33
28	Lovwindao	8
29	Lovunikapapanbola	43
30	LoCenter	281
31	Vureas HJSS	700
32	Ambaebulu HJSS	480
33	Torqil Training Center	344
34	Saratamata Host Family	300

5 kms



\*This map is based on the best available data. Locations of Evacuation Centres and number of occupants is approximate.