

**PENAMA EOC
Incident Controller (IC)**

Situation Report

Response Name	Ash Fall & Flash flooding/Land Slide.
Situation Report	4
Time & Date	Tuesday 1 st of May
Reporting period	2 days
Provinces affected	Penama
Attachment(s)	
PEOC Status	Operational

PENAMA PDCCC SITUATIONAL REPORTS FOR MANARO VOLCANO.

Incident Controller: Mr Tony Alatoa (IC)

Clusters:

Present: Logistics, Shelter, Food security, WASH, Education, Security, Gender Protection and Health

Overview situational reports:

State of Emergency currently in place, Provincial Emergency Operation Centre is fully functional.

Transportation of evacuees postponed to later in week aboard LC Blessing for Sarutalai ward to St Patrick College. Vusibulu to be completed tomorrow through to Wednesday, evacuation centre at Torgil RTC.

All assistance centrally stored at PWD with monitoring mechanism in place, with distribution lines through each cluster on request.

Road network to North, East and South Ambae accessible but in need of routine maintenance, due to heavy rainfall past few days. Air Vanuatu has declared Longana airport unsafe due to thick ash on runway, works commencing to clear ash fall on runway. Walaha airport is operational. Lolowai harbour accessible.

General Coordination:

Daily briefing at 9 am and debriefing at 4:30 pm at the provincial chamber. Attendance by most clusters at briefing with tasking updated and reporting back of tasks at debriefing.

Action Plan:

Date	Task	Start	Finish	Cluster / OIC	Comments
30 th April 2018	Establish Forward Controller for West Ambae	Ongoing	3 rd May 2018	EOC / Logistics	Forward Controller is Ps. Stephen Garae
	Completion of on island evacuation	Ongoing	15 th May 2018	Logistics / Shelter	
	Complete preparation of temporary off island sites	To be done	10 th May 2018	All clusters	To include exit plan from each cluster
	Completion of Civil registry of Ambae population	Ongoing	10 th May 2018	Logistics	Vehicle needed with volunteer
	Relocate level 7 – 13 school levels	To be done	12 th May 2018	Logistics / Education	
	Budget submission from clusters for next working month	Ongoing	3 rd May 2018	Logistics / NDMO	Submit 1 month plan

Assets: None

TOTAL	950	1405	464	475	142	202	383	147	4	5	6
-------	-----	------	-----	-----	-----	-----	-----	-----	---	---	---

Priority Issues:

Emergency Operational Centre		
Controller: Tony Alatoa		
Situation	Action	Person Responsible
Need formal appointment of controller	Formal appointment from appropriate authority for Mr Tony Alatoa as Disaster Controller for Ambae volcano / ash fall disaster	Controller / NDMO
Need controller for West Ambae	Need tasking for a controller for West Ambae operation, Mr Steven Garae Assistant SG to be seconded to West Ambae	Controller / NDMO
Need budget balance update for EOC	Briefing from NDMO on current disaster budget and potential budget for PENAMA EOC	Controller / NDMO
Need continuous electrical supply	Identify qualified electrician for scoping work in Saratamata and develop detailed quantity list of electrical parts and equipment. 1x 20KvA Genelite generator (2,200,000 VT from Leon Hardware)	Controller / Logistics
Need continuous water supply	Need to install pump for big tank, parts already on ground, awaiting technician arrival on ground to install parts for full functioning	Controller / Logistics
Need stable communication between EOC and Cluster operation	Need 2 satellite phone, 3 laptop, 2 Personal Computer, Video conference, wireless internet, 2 aerial drone, 2 way radio and printer (1,693,681 VT from computer world)	Controller / Logistics
Need stationery for EOC	Need 2 carton A4 paper, 10 blue pen, 10 black pen, 10 red pen, 4 blue board marker, 4 black board marker, 4 red board marker, 4 green board marker, 4 large white board (100,000 VT mixed)	Controller / Logistics
Need for EOC administrative support staff	Need formal recruitment of 1 HR officer, 1 Finance officer, 2 land transport logistical officer, 2 sea transport logistical officer, 2 air transport logistical officer, 2 Secretary	Controller / Logistics
Need refreshment for EOC	Need cash budget for refreshment for EOC meet, cluster meets and general public meets (60,000 VT for 2 months)	Controller / Logistics

Logistic Cluster		
Cluster lead: Jean Paul Ture		
Situation	Action	Person Responsible
Need transportation of evacuees to SPC and Torgil RTC	Logistical arrangement for ship to transport evacuees from North Ambae, LC Blessing arrived early this morning and will need to return to transport out earmarked evacuees later in week	Logistics
Need each cluster to submit budget plan for new month	Each cluster to submit budget plans by the 3 rd of May	Cluster leads

Education Cluster

Situation	Action	Person Responsible
Need tents and toilet facilities for evacuation educational sites	Shelter to source tents from NDMO	EOC / Shelter
Need for off island evacuation plan	Need EOC to determine timeframes for on island and off island evacuation, from which a final plan will be submitted	Education

Cluster lead: Emmanuel Garaesivi**Gender / Protection Cluster****Cluster lead: Amos Talu**

Situation	Action	Person Responsible
Need psychosocial support for evacuated communities and host communities	Psychosocial support activities and services at evacuation centres. 5 psycho social kits to be delivered to evacuation sites and additional on further assessment	Gender / Health
Need dedicated space at evacuation sites for kindergarten services with toilet facilities	Need to designate kindergarten space in evacuation sites	Gender / Shelter
Need distribution of food and water to affected communities in West	Food security to collate data and distribute rations accordingly	Food Security
Need Volcano Ash fall Health Hazard information	Health Hazard information to be provided by Health and GeoHazard Dept.	EOC / GeoHazard / Health
Need small business holdings stock protection	Need to determine stock management of affected communities, determine whether to convert to cash or transport out to safe zone	Logistics / Cooperative

Shelters Cluster**Cluster lead: Morgan Ngwango**

Situation	Action	Person Responsible
Need consent from Maewo chiefs for release of excavator	Discussion with Rasa on Maewo ongoing	Shelter / EOC
Need road clearing works for Walubue and road maintenance through road network	Need to mobilise Excavator from Maewo to Ambae and then return	Shelter
Need to set up family friendly shelters for each family in evacuation centres	Need family friendly tents to be sourced and shipped to Ambae	Shelter

WASH Cluster		
Cluster lead: Charlie Tari		
Situation	Action	Person Responsible
Need update from education on potential for schools to remain open	Await evacuation plan from education cluster	Education / WASH
Need to complete VIP toilets in evacuation centres	Await finance to complete draw down to suppliers, then will proceed with material supply	Logistics

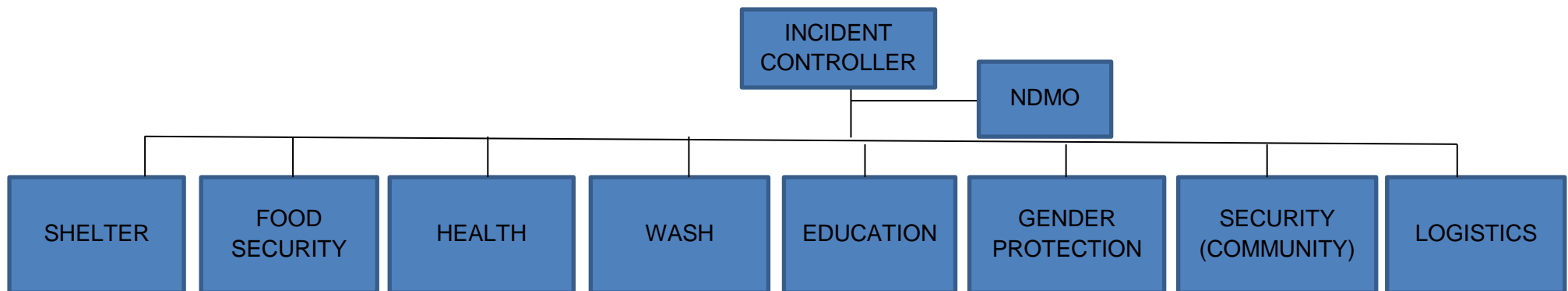
Health Cluster		
Cluster lead: Markleen Tagaro		
Situation	Action	Person Responsible
Need nursing staff at vacant Walaha dispensary	Nursing officer to be sourced by Health cluster to man Walaha dispensary	Health

Food Security Cluster		
Cluster lead: Joel Kalnpel		
Situation	Action	Person Responsible
Need GPS coordinates for extension of provincial subdivision	GPS coordinates to be sourced from physical planning unit in Province	EOC

Security Cluster		
Cluster lead: John Joe		
Situation	Action	Person Responsible
Need to evacuate community members still in evacuated sites of South Ambae	17 individuals identified and will be escorted to evacuation centres, will require 2x vehicle to undertake operation	Security
Need 2 out boat engine	2x 40 HP Mercury boat engine to be sourced for NDMO boat and other boat for mobilisation of Emergency teams and evacuees. Engine needs to be transported to Ambae on earliest sea transport.	EOC / NDMO

ORGANOGRAM

PENAMA DISASTER & CLIMATE CHANGE COMMITTEE (PDCCC)



Maewo Proposed Evacuation Centers

No	Name	Location	Holding Capacity per community	Denomination
----	------	----------	--------------------------------	--------------

1	Namumu	North	200	Anglican, Church of Christ
2	Marino	North	150	Anglican
3	Naone	North	150	Anglican
4	Gaiowo	North	200	Anglican
5	Lalavaru	North	152	Church of Christ
6	Betarara	North	200	Church of Christ
7	Kerebei	North	200	Anglican
8	Rongnawo	North (inland)	130	Anglican
9	Ngota	North (inland)	130	Anglican
10	Naviso	East	150	Anglican
11	Narovorovo	Central	200	SDA, Anglican
12	Nasawa	Central	200	SDA, Anglican, Church of Christ
13	Asanvari	South	200	Anglican
Total number of people			2,260	

No	Name	Location	Holding Capacity	Denomination
14	Rembu	North	123	Anglican
15	Qwatewol	North (inland)	123	Anglican
16	Navenvene	Central	123	SDA, Anglican
17	Baitora	Central	123	
18	Talise	Central	123	
19	Avenvai	South	123	Anglican
Total number of people			738	

Relocation Sites

No	Name	Location	Land size (ha) - estimate
1	Sanason	South	600

2	Ulu	Central	300
3	Naruru	Central	15
4	Loloruku	North	209
	Total		1,124